

smhRxExpress

1700 S. TAMIAMI TRL., SARASOTA, FL 34239

(941) 917-MyRx (6979)

Lisa Hymel, Director of Pharmacy SMH-S

Jennifer Hiles, smhRxExpress Pharmacy Supervisor

Management Council

Nov 8th, 2023



smhRxExpress

- Retail pharmacy providing pharmacy services to SMH employees and their families on the SMH pharmacy plan
 - Prescription medications
 - Over the counter medications
 - Medication counseling
 - Vaccine administration- coming soon
- Located on 3 Waldemere close to A and B elevators and medical library (old 3C conference room)
- Hours of Operation: Monday – Friday, 6:30am – 5pm

smhRxExpress

- Will my copay change?
 - SMH pharmacy will be the preferred pharmacy
 - Tier 1: \$8 for 30 days, \$16 for 90 days
 - Tier 2, Tier 3, Specialty: No change
 - All other pharmacies- Co-pays remain the same
- Will the medication formulary change?
 - We are not planning to make changes to the formulary this year
- Will there be a delivery option?
 - We are working on adding home delivery as an option soon
- Will the pharmacy be part of the GCMM/PIP program?
 - We will be part of the pharmacy insulin program and offer many specialty medications

smhRxExpress



Your physician may send new prescriptions electronically.



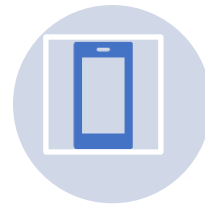
We accept transferred prescriptions from all local pharmacies.



Choose your notification option. We offer phone calls, text messaging, or email notification.



We accept SMH FSA cards, cash, credit, debit and checks.

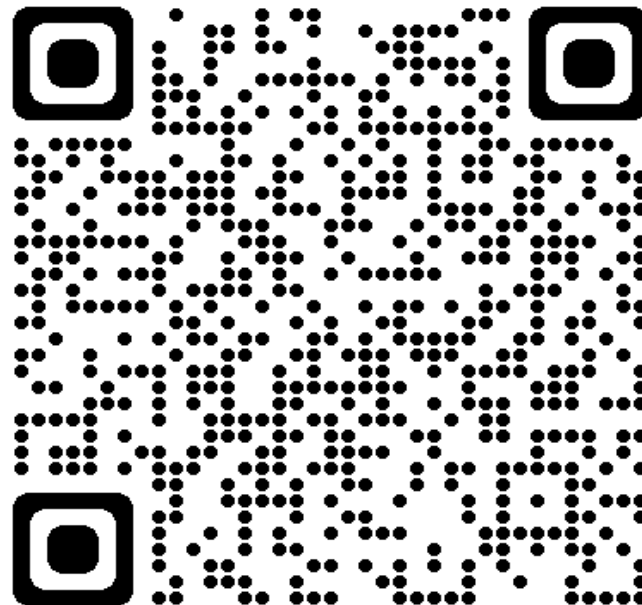


Utilize the website or the app to order refills electronically

Scan the QR code to pre-register

OR

Stop by, say hello, and fill out a registration form



Call

941-917-MyRx (6979)

Email

SMHRX@SMH.COM

